

Animal Coverings and Classification

The following activities are intended to be used as a follow-up to the virtual tour of the Toronto Zoo's Americas Pavilion, with a focus on animal coverings and adaptations.

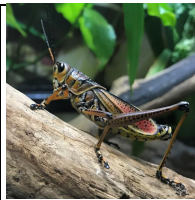
Activity one - Mix and Match

Animal coverings are one clue that can tell us how an animal should be classified. Using the information below see if you can properly classify animals into their group. While many are straightforward and show all characteristics of their group, some can have an adaptation or two that might make you question where they belong. For each animal look them up and see how many characteristics they have from each category.

<p><u>Mammal</u></p> <ul style="list-style-type: none"> ○ Fur or hair ○ Endothermic (warm blooded) ○ Live birth ○ Vertebrate ○ Lungs 	<p><u>Fish</u></p> <ul style="list-style-type: none"> ○ Wet scales ○ Fins ○ Gills ○ Ectothermic (cold blooded) ○ Vertebrate ○ “Jelly” like eggs
<p><u>Reptile</u></p> <ul style="list-style-type: none"> ○ Dry Scales ○ Ectothermic (cold blooded) ○ Leathery eggs ○ Vertebrate ○ Lungs 	<p><u>Bird</u></p> <ul style="list-style-type: none"> ○ Feathers ○ Beak ○ Wings ○ Endothermic (warm blooded) ○ Hard Eggs ○ Lungs ○ Vertebrate
<p><u>Amphibian</u></p> <ul style="list-style-type: none"> ○ Wet Skin ○ Gills and lungs ○ “Jelly” like eggs ○ Ectothermic (cold blooded) ○ Vertebrate 	<p><u>Insect</u></p> <ul style="list-style-type: none"> ○ Invertebrate ○ Three body sections ○ Ectothermic (cold blooded) ○ Eggs ○ Six Legs



Echidna



Florida Lubber



Poison Dart Frog



Florida Gar



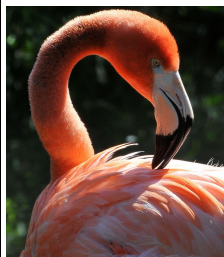
Gila Monster



Naked-Mole Rat



Lemur



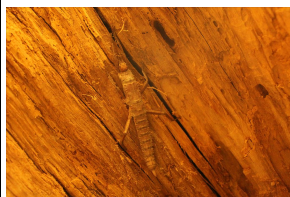
Flamingo



Chamaeleon



Bat



Thorny Devil



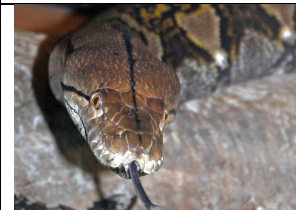
Axolotl



Ostrich



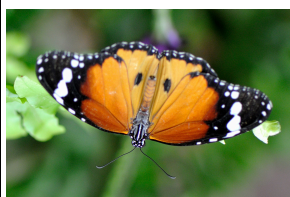
Aldabra Tortoise



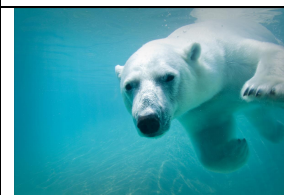
Reticulated Python



Jumbo Gourami



Butterfly



Polar Bear

Activity Two- Super Animal

Now that we have learned some of the amazing characteristics and adaptations (creature features) of different animals, see if you can take some of your favourite characteristics and combine them into one “super animal”. Use the space below to draw your animal, and describe how their adaptations help them to survive!



My Animal is a _____

The Creature Features I gave it are:



All photos sourced from the Toronto Zoo Website.

Answers:

Mammal - Polar bear, Echidna, Bat, Naked Mole Rat, Lemur.

Reptile - Reticulated Python, Chameleon, Aldabra Tortoise, Gila Monster.

Fish - Jumbo Gourami, Florida Gar.

Bird - Flamingo, Ostrich.

Insect - Florida Lubber, Thorny Devil, Butterfly.

Amphibian - Axolotl, Poison Dart Frog.